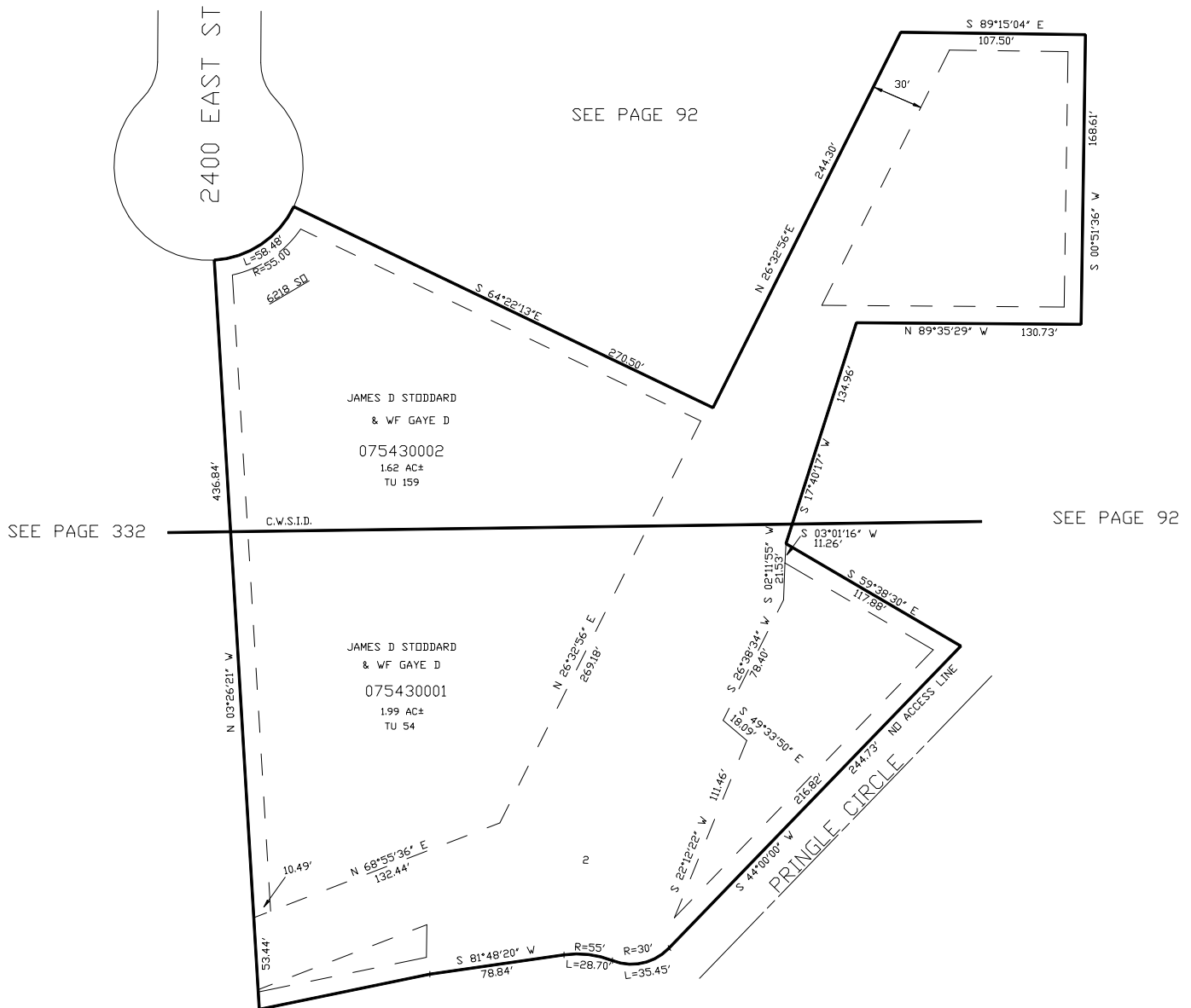


PART OF THE S 1/2, OF SECTION 23, T.5N., R.1W., S.L.B. & M.  
STODDARD SUBDIVISION AMENDED LOT 2

543

WEBER COUNTY  
SCALE 1" = 50'

TAXING UNIT: 54,159



FOR COMPLETE ENG DATA SEE  
ORIGINAL DEDICATION PLAT IN  
BOOK 50, PAGE 34 OF RECORDS.